

**GREE**  
AIR CONDITIONER

## Innovative Heat Source Induction Air Supply Technology

COMFORTABLE PERSONALITY, COMING WITH THE AIR

**GREE**



Gree Electric Appliance, Inc. of Zhuhai

Add: West Jinji Rd, Qianshan, Zhuhai, Guandong, China 519070

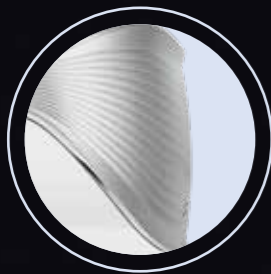
Tel: (+86-756)852 2218

Fax: (+86-756)866 9426

[Http://global.gree.com](http://global.gree.com)

Email: [gree@cn.gree.com](mailto:gree@cn.gree.com)

# DETAILED DESIGN



The fish-tail-lined aesthetic design matches with the ripple, looking like a fish tail beauty



The rippled air inlet design just as a fish jumping into the water causes layers of ripples



The silvered decoration strip embodies noble and elegant temperament



The heat source induction system automatically senses and adjusts the swing angle



Independent left and right swing; six kinds of orientation and two automatic swing modes



Big upgraded air guide louver provides faster and more even air supply



## Various air supply modes with human induction

Intelligent eye: heat source sensing system with high-quality sensor in the industry; The sensor has a built-in  $8 \times 8$  matrix 64-pixel high-definition infrared probe, which provides a mechanical rotation angle of  $180^\circ$  in detection period and an effective viewing angle of  $120^\circ$ .

High-precision detection enables precise control of the air conditioner.

Gree innovative heat source induction air supply technology: monitor the number of people in the room and their location in real time, automatically adjust the swing angle according to preset settings and air conditioner usage habits, and realize a variety of swing working modes to meet the individual needs of different people.



### Air supply follows people

In this mode, the air conditioner can automatically sense your position and automatically adjust the swing angle. The air supply will follow people for rapid cooling.



### Air supply avoids people

In this mode, the air conditioner can automatically sense your position and automatically adjust the swing angle, to avoid direct blowing to the human body for taking care of the users' health.



### Surrounded air supply

In this mode, the air conditioner swings automatically from left to right. When the air swings over the human body, it automatically accelerates to swing in an instant, and then slows down the speed, just like surrounded by the natural breeze.



### Energy-saving operation when nobody in the room

What to do when a person leaves the room briefly and forgets to turn off the air conditioner? Soyai's unique "unmanned energy saving" function\* will automatically switch the unit to a low-frequency operation state to achieve energy saving when it detects that there is no one in the room.



\*Note: As for this function, you need to set it through the APP at first. When it is turned on, it will run automatically when no one is in the room.



## Eight kinds of air supply ways

The original zoning independent air supply system, with independent control of two groups of left&right swing louvers, can achieve six kinds of directional air supply modes and two automatic swing modes, quickly reaching the required air supply angle.

### Six kinds of directional air supply modes

#### Left-side ultra-wide-angle air supply

The two sets of swing louvers blow to the left side of the space at a large angle



#### Right-side ultra-wide-angle air supply

The two sets of swing louvers blow to the right side of the space at a large angle



#### Left wide-angle air supply

The two sets of swing louvers blow to the left side of the space at a small angle



#### Right wide-angle air supply

The two sets of swing louvers blow to the right side of the space at a small angle



#### Mid-directional air supply

Two sets of swing louvers blow toward the middle of the space



#### Left and right reversed wide-angle air supply

The two sets of swing louvers blow to the left and right at a large angle



### Two automatic swing modes

#### Fan-shaped swing

The two sets of swing louvers swing left and right automatically at the same speed and in the same direction



#### Butterfly-wing swing

The two sets of swing louvers swing left and right automatically at the same speed and in different directions



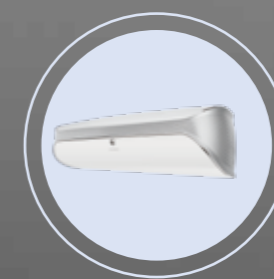
## Big upgraded motional air guide louver

Soyal's big motional air guide louver has been comprehensively upgraded. With the zoning independent air supply system, the air is supplied in diversification, which not only achieves cold and warm separated distribution, but also makes the air supply wider, farther and more even.



#### Strength enhancement

The air guide louver is integrally formed by multiple layers of materials which is more reliable



#### Larger size

The air guide louver is longer and wide, effectively increasing the air supply distance



#### Wider air supply

The inside of air guide louver is added with the wave band for wide-range soft air supply

## In cooling

The big air guide louver goes up and the cool air blows out horizontally to the top, to achieve cooling from top to bottom



## In heating

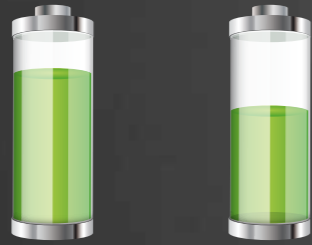
The big air guide louver goes down and the warm air blows out horizontally to the bottom, to achieve heating from bottom to top





## High energy efficiency

The inverter models' energy efficiency ratio APF is up to 5.40.



## Gree+ APP

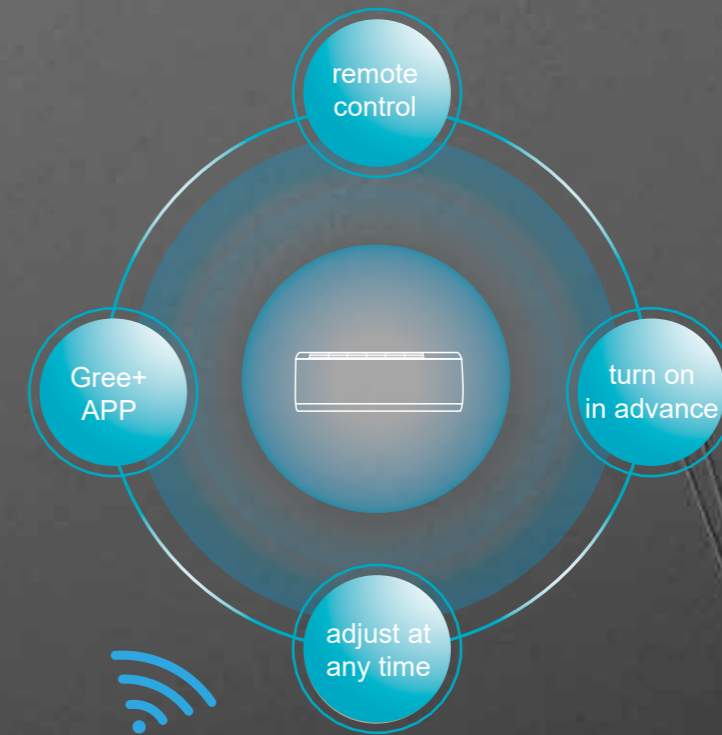
Achieve long-distance control of unit on and off, temperature and fan speed, etc. with mobile phone WiFi.

Scan and download Gree+ APP



## Noise as low as 18dB

By adopting the 120mm super-large cross-flow fan blade, the big air volume is achieved and the noise is strictly controlled at 18dB.



\* Note: 18dB is the lowest noise that Soyol air conditioner can achieve in mute mode. The data is derived from the laboratory test report. The data may vary if the test environment and conditions are different.

